

SCREEN DRYING CABINETS

- RELIABLE** 3 Year Warranty
- HEAVY DUTY** Industrial stainless steel finned heater(s)
- CAPACITY** Holds ten (10) or twenty four (24) 25" x 36" (63.6 x 91.4 cm) screens of any type
- POWERFUL** One (1) 200 CFM (5.7 CMM) air flow blower or Two (2) 250 CFM (14.2 CMM) air flow blowers
- CONSISTENT** Pressurized cabin with positive air flow keeps out contaminants even if an air leak occurs
- EFFECTIVE** Screens sit horizontal on removable shelves (angled to provide edge contact only)
- SECURE** One (1) sealed latching door 10 screen or two (2) individually sealed latching doors on the 24 screen unit
- CONTROL** 10 screen cabinet has Hi-Low heat adjustment OR the 24 screen cabinet has breaker on/off switch, pilot light, digital temperature control, both have ability to run air only or variable heat.
- FAST** Dries emulsion as quickly as 20 minutes
- EFFICIENT** 4" (10 cm) exhaust duct for contaminated air removal
- PRECISE** Light tight heavy duty double wall
- EASY** Simple to clean or replace filtered air intake

Options

- Stainless steel shelves for rustproof drying
- Casters (standard on 24 screen cabinet)
- 240 Volt (standard on 24 screen cabinet)
- Expanded Depth for MHM style screens with pins (24 screen cabinet)

E2331 exposure unit fits perfectly on top of 10 screen drying cabinet. Foot p/n 08-08-018 required

NEW LARGER SIZE!



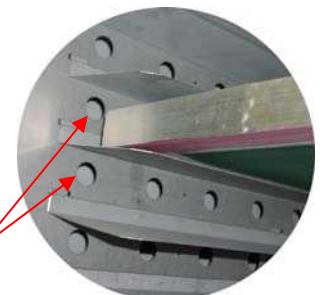
VDC-253610
10 Screen Drying Cabinet

3 YEAR WARRANTY

Dry your screens securely in the 10 or 24 screen Dri-Vault. Variable heat and powerful filtered air flow can have your screens ready for exposure, in as little as **20 MINUTES!**



VDC-253624
24 Screen Drying Cabinet

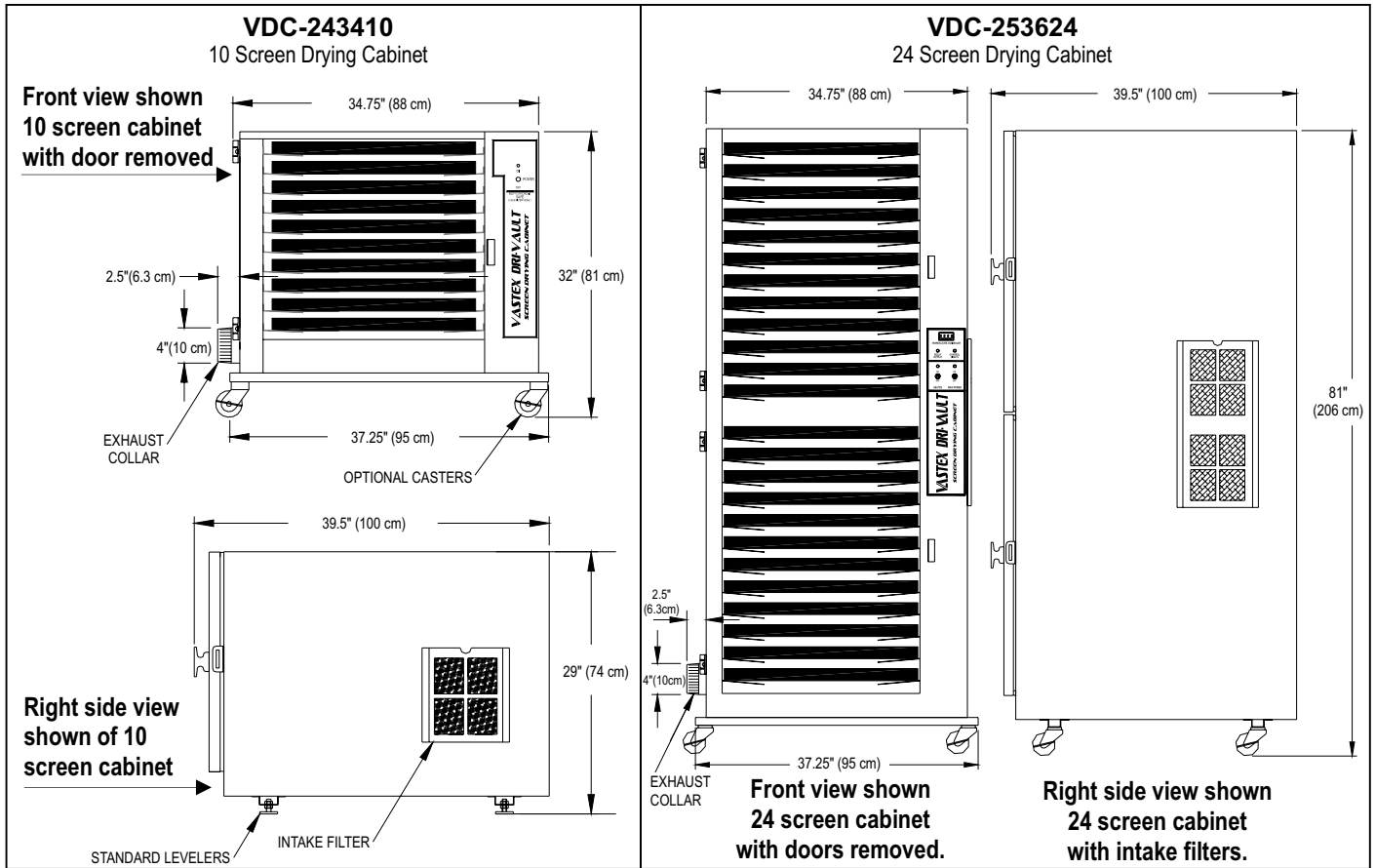


Dynamic Air Flow above and below the screens ensures consistent & even drying.

Dri-Vault Drying Cabinets Technical Specifications

Ever wonder why you have pinholes or debris in the emulsion on your screens? Have multiple jobs to do but are wasting time waiting for your screens to dry? Is your emulsion activating before you even get to burn your screens? If so, you need the Dri-Vault!

The Dri-Vault provides a **safe** environment to, not only dry your screens in a timely fashion, but it's powerful pressurized air flow system keeps contaminants off your screens and the double-wall sealed environment prevents UV light from leaking in and activating your emulsion.



	VDC-253610	VDC-253624
Defect Warranty	3 Year	3 Year
Maximum # of Screens	10 @ maximum size	24 @ maximum size
Maximum Screen Size	25" x 36" x 1.625" (63.5 x 91.4 x 4.12 cm)	25" x 36" x 2.25" (63.5 x 91.4 x 5.7 cm)
Smallest Screen Width	18 "(46 cm)	18" (46 cm)
Blower (Free Air)	250 CFM (7.1cmm) 240volt	500 CFM (14.2 CMM)
Overall Depth	39.5" (100cm)	39.5" (100 cm)
Overall Width	34.75" (88 cm)	34.75" (88 cm)
Overall Height)	29 " (74cm) / 32" (81 cm) w/ optional casters	81" (206 cm)
Heater Wattage	1,250 Watts 120 Volts or 1,550 Watts 240 Volts	2 x 1,550 = 3,100 Watts 240 Volts
Electrical Power	240V / 6A / 1 Ph. / 50/60 HZ / NEMA 6-15P plug	240V / 16A / 1 Ph. / 50/60 HZ / NEMA 6-20P plug
Shipping Weight*	305 lbs (138.3 kg)	668 lbs (303 kg)
Shipping Dimensions*	45" x 43" x 36" [114 x 109 x 91 cm]	44" x 44" x 82" [112 x 112 x 208 cm]



International tel: +44 1282 841777

Tel: 0845 224 1204 Fax: 0845 224 1205
 Email: info@dalesway.co.uk Web: www.dalesway.co.uk